

Welche Vorzeichen wo?



A musical staff with a treble clef. The staff is divided into seven measures. The first three measures are empty. The fourth measure contains a note on the 4th line. The fifth measure contains a note on the 5th line. The last three measures are empty.

1#    2#    3#    ohne Vorzeichen 1b    2b    3b

Welche Dur - Tonart?



An empty musical staff with a treble clef, divided into seven measures.

1#    2#    3#    ohne Vorzeichen 1b    2b    3b

Welche Moll - Tonart?



An empty musical staff with a treble clef, divided into seven measures.

1#    2#    3#    ohne Vorzeichen 1b    2b    3b

## Scheib folgende moll - Tonleiter

*a-moll, rein*

*a - moll, harmonisch (immer 7+)*

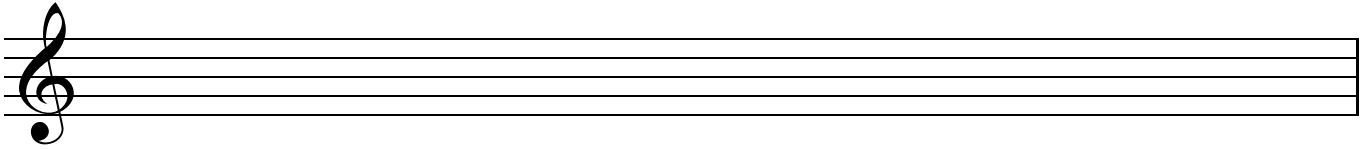
*a - moll, melodisch (aufwärts: 6+, 7+, abwärts: rein)*

1#rein

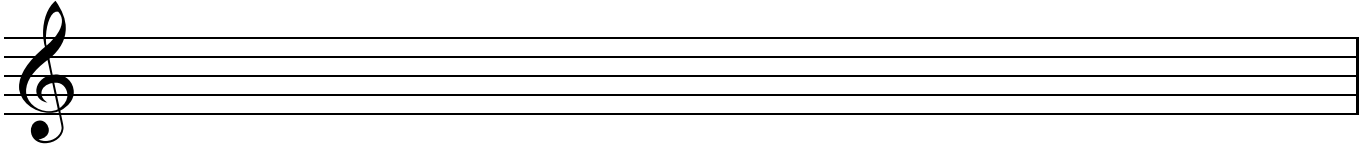
1#harm.

1#mel.

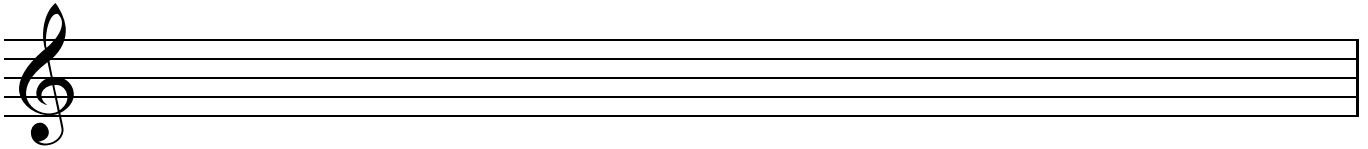
2#rein



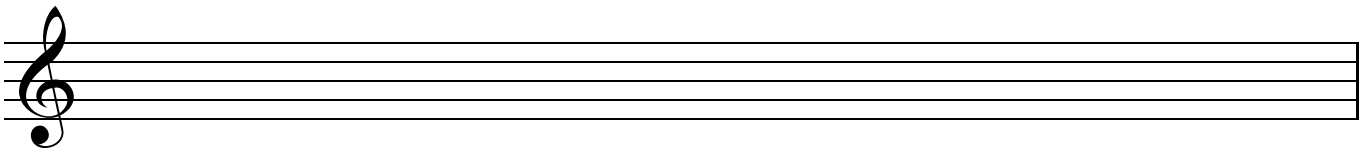
2#harm.



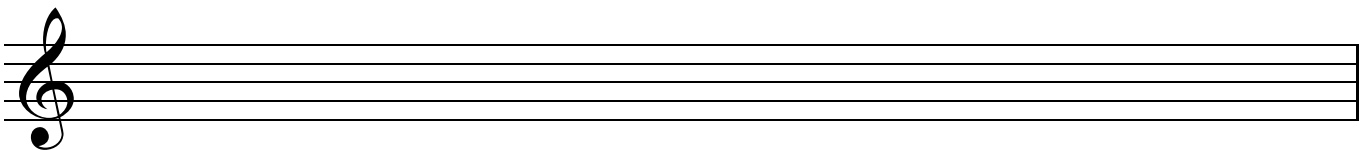
2#mel.



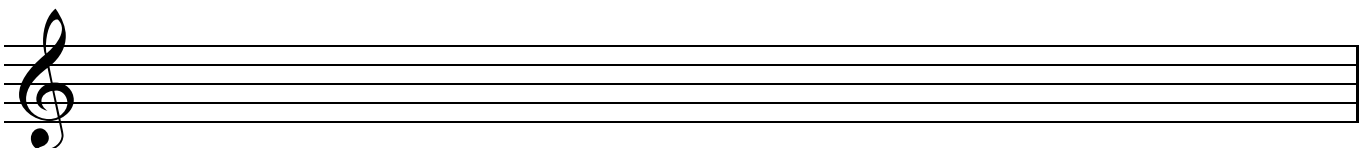
3#rein



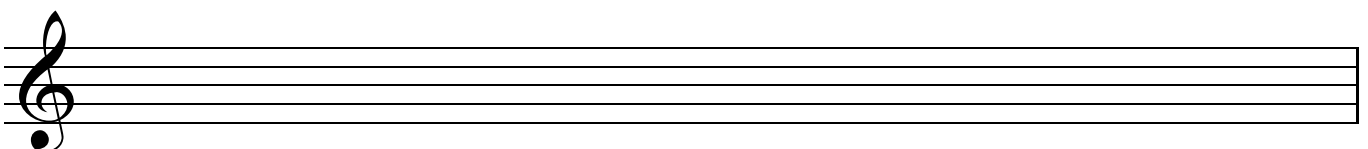
3#harm



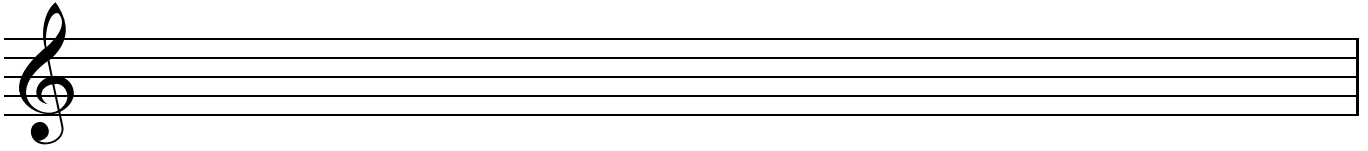
3#mel



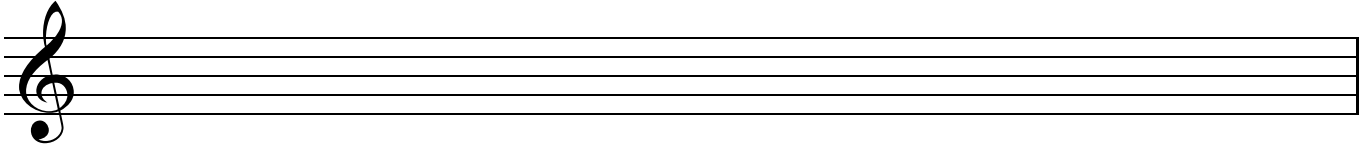
1brein



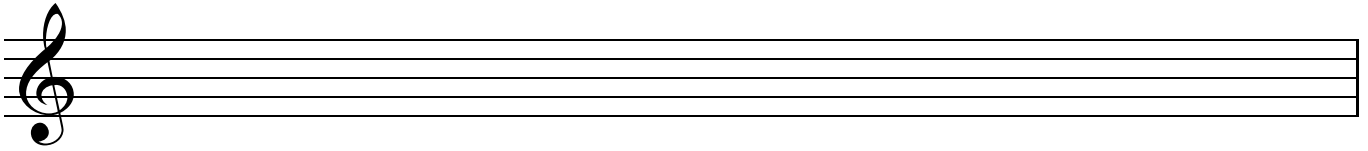
1bharm



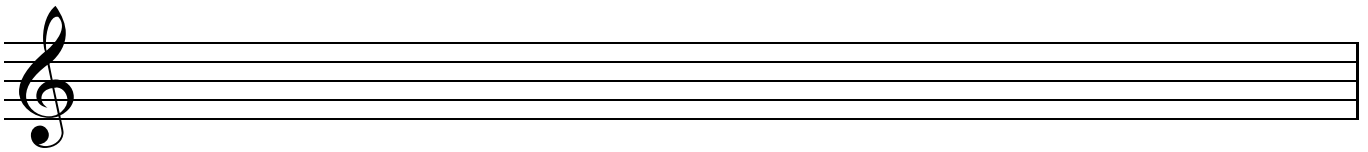
1bmel



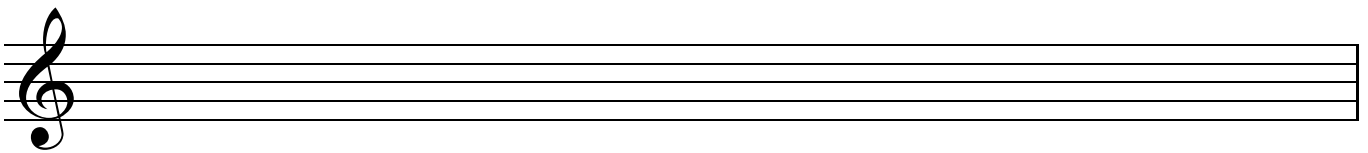
2brein



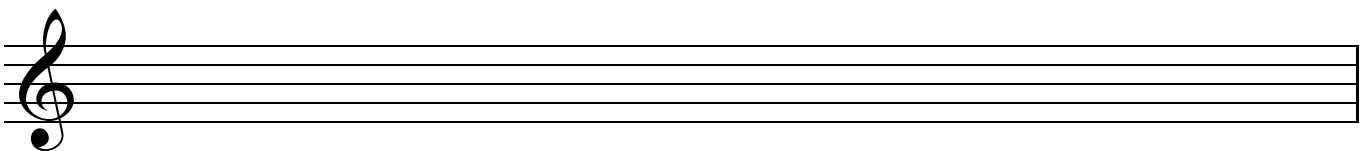
2bharm



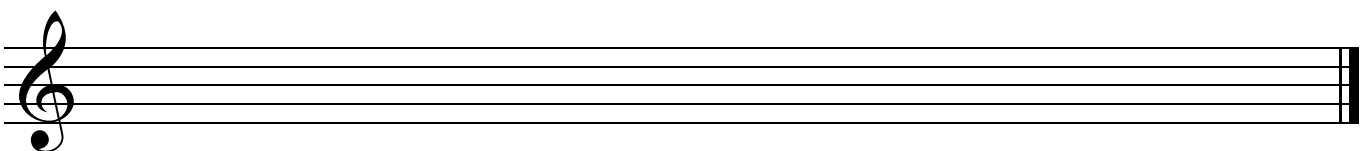
2bmel



3brein



3bharm



3bmel